



Dashwood House, W5

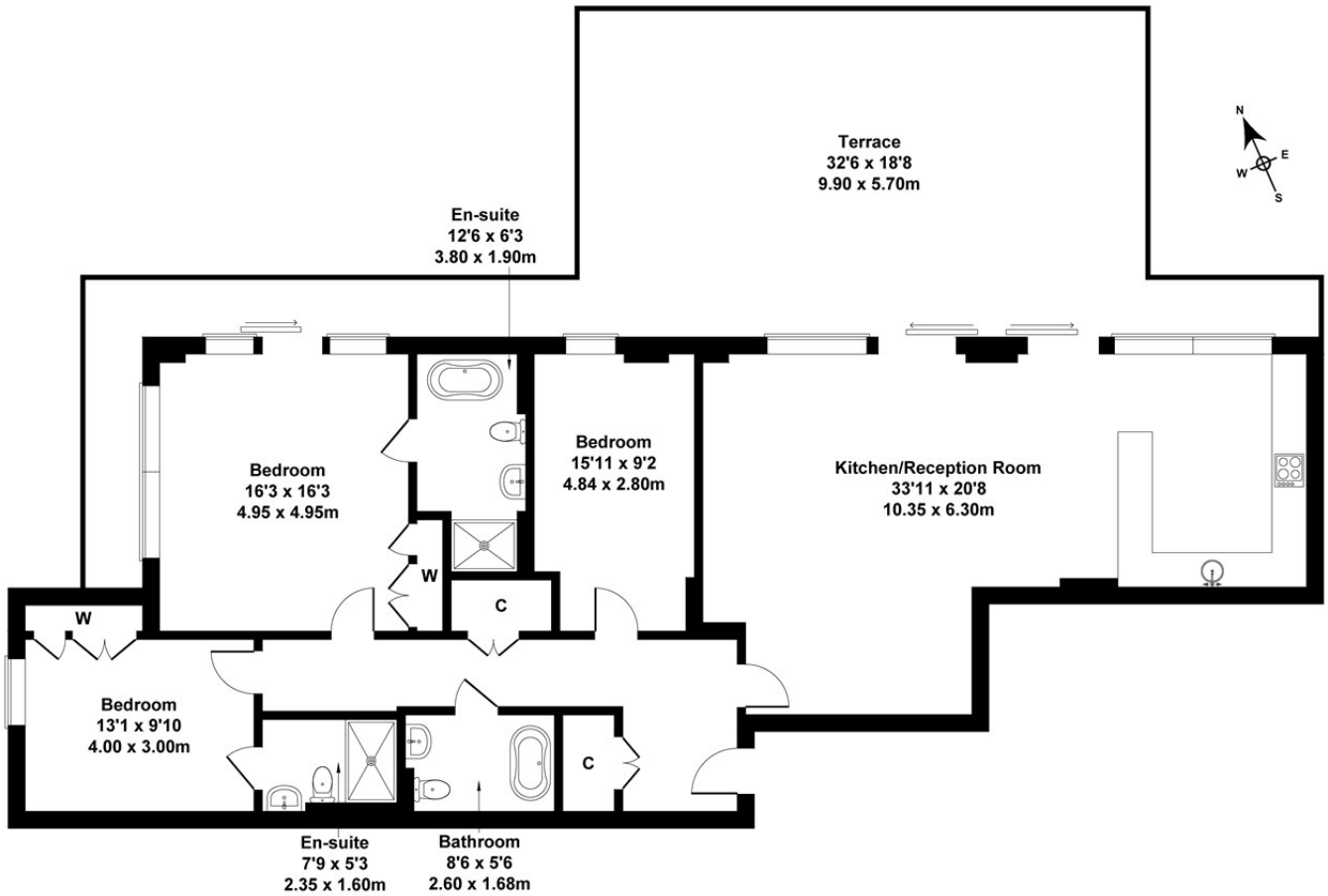
An awe-inspiring modern apartment, touching 1500 sq ft, within the prestigious Dicken's Yard development in the heart of Ealing. This three-bedroom, three-bathroom apartment, with wrap-around balcony and large terrace is set on the ninth floor providing far-reaching views across London and has underground secure parking.

- Large three bedroom apartment
- Three bathrooms
- Wraparound terrace
- Air Conditioning
- Secure underground parking
- Ninth Floor of Dicken Yard
- Heart of Ealing Broadway
- Close to transport links
- 235 years remain on lease
- Short stroll to Ealing Broadway station

Asking Price £1,699,950

Dashwood House

Approximate Gross Internal Area
1496 sq ft - 139 sq m



NINTH FLOOR

Not to Scale. Produced by The Plan Portal 2022
For Illustrative Purposes Only.

Energy Efficiency Rating		
	Current	Potential
Very energy efficient - lower running costs		
(92 plus) A		
(81-91) B	83	83
(69-80) C		
(55-68) D		
(39-54) E		
(21-38) F		
(1-20) G		
Not energy efficient - higher running costs		
England & Wales	EU Directive 2002/91/EC 